

DEL NORTE GUN CLUB

Range Rules and Member Code of Conduct...Rev.2021.3



Table of Contents

Member Code of Conduct.....	page 3
General Range Rules.....	page 4
Range Safety Officer Procedure.....	page 5
Range Emergency Procedure... ..	page 6
Primary Range Safety Rules... ..	page 7
Range Maps... ..	page 8-10
Range Specific Safety and Shooting Rules... ..	page 11-16
RV and Primitive Camping... ..	page 16-17
DNGC Liability Release Form.....	page 18

DEL NORTE GUN CLUB RANGE RULES AND MEMBER CODE OF CONDUCT

The Range Rules and Member Code of Conduct provide for a safe and friendly environment for members and guests. All members are expected to read, be familiar with, and abide by the Range Rules and the Member Code of Conduct. Enforcement and adherence to these rules is the duty and responsibility of every member.

Member Code of Conduct

- Members and their guests shall conduct themselves in accordance with the range rules.
- Members shall be considerate of other members while present at the club, while shooting, when volunteering, or participating in club activities.
- Members will refrain from the use of obnoxious, offensive or abusive language and behave in a civil manner with each other.
- Members shall not willfully destroy DNGC property, engage in verbal or physical attacks on another member or guest, or act inappropriately when approached by a Range Safety Officer for safety violations.

Violations of the Del Norte Gun Club range rules and/or the Member Code of Conduct may result in any or all of the following:

- Verbal warning or coaching at the time of the infraction.
- Written warning for the infraction.
- Suspension of membership privileges for a period of time to be determined by the DNGC Board of Directors and the Chief Range Safety Officer.
- Revocation of membership to DNGC.

Written warnings, suspensions and revocations are matters that will be brought before the DNGC Board of Directors at the monthly meeting. The subject member will be notified of the time and place of the meeting and the member may address the DNGC Board on their own behalf.

The decisions of the DNGC Board of Directors regarding range rules, safety violations and the Member Code of Conduct are final.

General Range Rules

1. The range will be open from sun up until sun down except on Wednesday's.
2. The RANGE IS CLOSED every Wednesday from 5:00AM to 12:00PM and no live fire is permitted. This is for range maintenance and improvements. Only authorized members are allowed access to the range for maintenance activities.
3. All members MUST use their gate key card upon entering or exiting the range. DO NOT tailgate in behind another vehicle.
4. All members and their guests must wear their badges so that the badge is visible. This does not apply to competitive matches or commercial activities.
5. Members are allowed to bring 2 shooting guests, including children, per visit. Any additional guest may not be on the shooting line and must remain with the member. Members are required to review the range rules with their guests and complete a release of liability (waiver) with each guest. Waivers may be found at the kiosk near the gate entry. Complete the form and place it in the provided drop box.
6. Guest(s) must remain with the member at all times and shoot on the same range as the member. Members are responsible for the safety and conduct of their guests and must supervise their guest(s) at all times.
7. Vehicles are allowed only on established roads.
8. The speed limit on the range is 15MPH.
9. No hunting or shooting of wildlife is permitted on the range. This includes snakes.
10. No member or guest may handle a firearm while under the influence of alcohol or a controlled substance. Alcohol may only be consumed after firearms have been stored. Alcohol may only be consumed in designated areas. The designated areas are the RV sites, primitive camping sites, HQ facility, and the Shotgun HQ. Alcohol consumption is prohibited on all other areas of the range.
11. Each member is responsible for cleaning up their litter and waste before leaving the range. This includes shotgun hulls. Trash receptacles are present on all of the ranges.

Range Safety Officer (RSO) Procedures

Del Norte does not provide full time RSO's. Member's are given training at orientation and act as member RSO's per the following procedure:

1. The Range Safety Officer (RSO) has control of the range being used. If no RSO is provided, the first member on the range is the RSO for that range. If there are other shooter(s) on that range when the RSO leaves the range, they designate another member on the range to be the RSO for that range.

Range commands are as follows:

- a. **Cease Fire** – means stop firing immediately, remove finger from trigger, keep the gun pointed in a safe direction or holstered and wait for further commands.
Anyone may call a Cease Fire for any reason.
 - b. **Make the Range Safe** – means to stop firing, open the actions on all firearms, place all firearms on the bench or in a rack (as equipped), and step back from the firing line.
 - c. **Range Is Cold** – called after all firearms have been verified to be safe and it is safe for shooters to go down range. **ABSOLUTELY, NO HANDLING OF FIREARMS OR BOWS ONCE THE “RANGE IS COLD” COMMAND IS GIVEN AND SHOOTERS ARE DOWN RANGE. SHOOTERS MUST STAND BEHIND THE FIRING LINE WHEN OTHERS ARE DOWN RANGE.**
 - d. **Range Is Hot** – called when no one is down range (target pullers on the 1k TKD may be in the pits) and it is safe to resume shooting.
2. It is imperative that all members follow these procedures at all times.
 - a. Communicate with other members when you arrive at the range.
 - b. Communicate with other members when you are leaving the range.
 - c. Visually verify the firing line prior to calling RANGE IS COLD.
 - d. Visually verify down range prior to calling RANGE IS HOT
 - e. If you see an unsafe act, a safety violation or an unsafe condition, call CEASE FIRE. Correct the situation prior to resuming shooting.

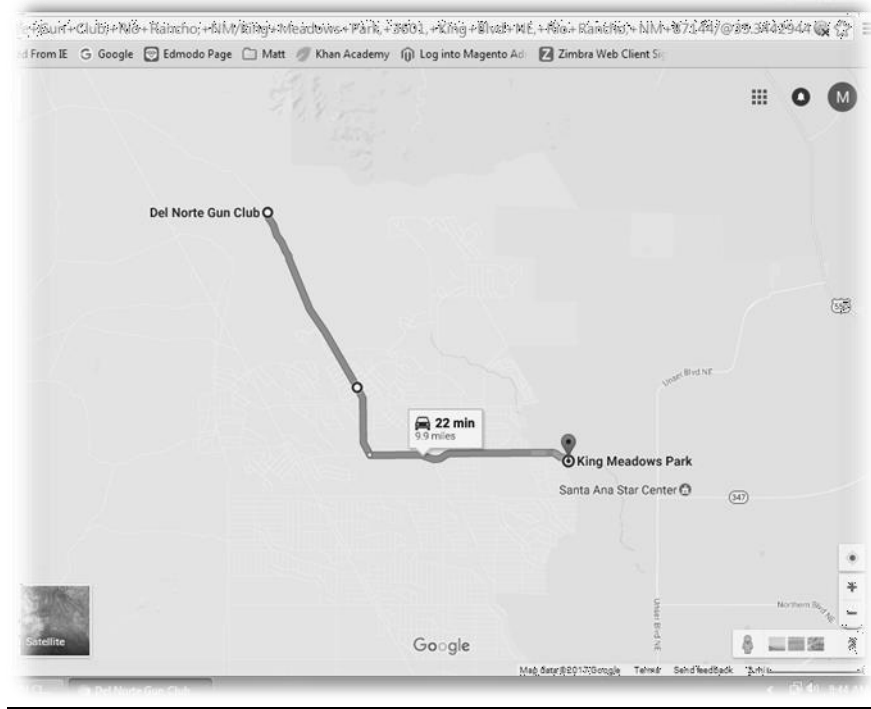
Failure to follow the RSO procedures can result in serious injury or death. Most accidental range deaths occur on the firing line or directly down range of the firing line because someone failed to heed safety protocols. Shooters must STRICTLY ADHERE to the RSO procedures and commands. Your life and your fellow members' lives depend on it.

RANGE EMERGENCY PROCEDURE

The location of Del Norte Gun Club is remote. There is no landline service and cellular service is intermittent. While using the range it is highly recommended that members always have a charged cell phone available in case of emergency. Should a medical emergency arise that requires professional medical care, it is of the utmost importance to get the affected individual to professional medical care as soon as possible. In the event of a medical emergency:

- 1) Provide first aid to the individual that you are comfortable and/or qualified to provide.
- 2) If the individual can be moved, get the individual into a vehicle and begin transport to KING MEADOWS PARK or an emergency medical facility. King Meadows Park is where the paved road ends on King Blvd. Emergency Services may meet you in route or at King Meadows Park.
- 3) Contact 911 via cell phone as soon as possible. Inform 911 services that you have a medical emergency at Del Norte Gun Club and you are in route to King Meadows Park.

DEL NORTE GUN CLUB RANGE HANDBOOK (REV 2021)



PRIMARY RANGE SAFETY RULES

These rules are effective on all ranges.

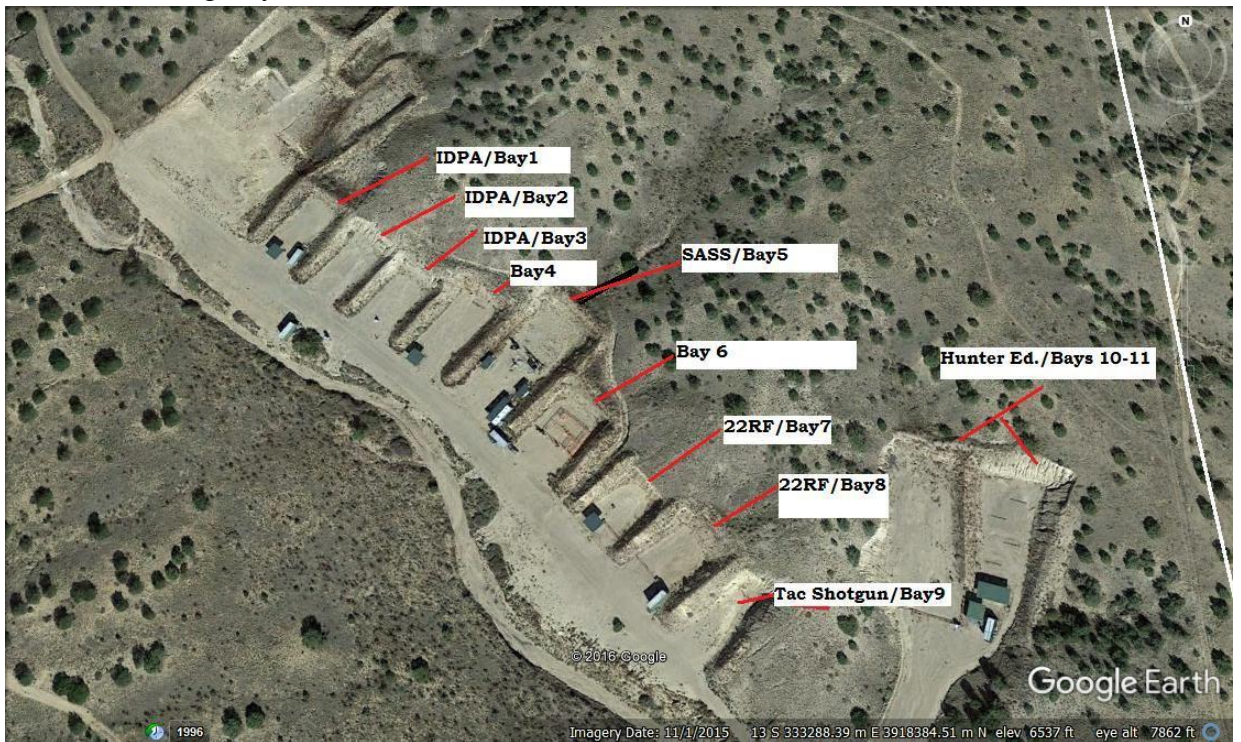
1. Follow the NRA Rules for Safe Gun Handling:
 - a. Always treat every gun as if it were loaded.
 - b. Always keep the muzzle pointed in a safe direction.
 - c. Always the gun unloaded until ready to use.
 - d. Always keep finger off trigger until ready to shoot.
 - e. Always know your target and what is beyond it.
2. Follow the NRA Rules for Using or Storing a Gun:
 - a. Know how to use the gun safely.
 - b. Be sure the gun is safe to operate. Check for barrel obstructions before use.
 - c. Only use the correct ammunition for your gun.
 - d. Always store guns so they are not accessible to unauthorized persons.
3. In addition to the NRA Rules:
 - a. No one is permitted on any firing line or shooting position unless wearing proper eye protection and hearing protection.
 - b. Firearms will be fired only in designated areas and at appropriate targets.
 - c. An appropriate target is a paper target attached to the target frame, a gong or metal target provided by the club, clay pigeons on the shotgun range or targets approved for use by the DNGC Board or Chief Range Safety Officer(CRSO). Please see acceptable bay targets in the specific bay requirements.
 - d. All targets and targets stand must be placed at a height that allows fired rounds to impact the berms 4ft to 6 ft from the bottom of the berms.
 - e. Only engage targets that located directly in front of your firing position.
4. All firearms must be cased, holstered, be unloaded in a gun rack, or have the action opened and be pointed towards an impact berm when not in use. No firearms or bows may be handled when anyone is downrange. The use of chamber flags is preferred.
5. Shooting at aerial targets is prohibited except at the Shotgun Range following the specific rules for that range or activities with prior DNGC Board approval.
6. Full Automatic/Select Fire/Class III firearms and actuator type devices may only be used with prior DNGC Board approval in a bay designated by the DNGC Board.* Use without DNGC Board approval is grounds for immediate termination of membership.
7. Bump-firing is not permitted on any range. Aimed fire is only permissible.
8. .50 caliber center-fire rifles or larger may only be used with prior DNGC Board or CRSO approval and may only be used on the 1000 KD range.
9. Tracer, armor piercing, incendiary, explosive ammunition, or explosive targets are not permitted on any range.
10. The Chief Range Safety Officer (CRSO) and the Del Norte Certified RSO's are the

ultimate authority for enforcement of the Range Rules or any safety issue.

Range Overview Map



Action Shooting Bays



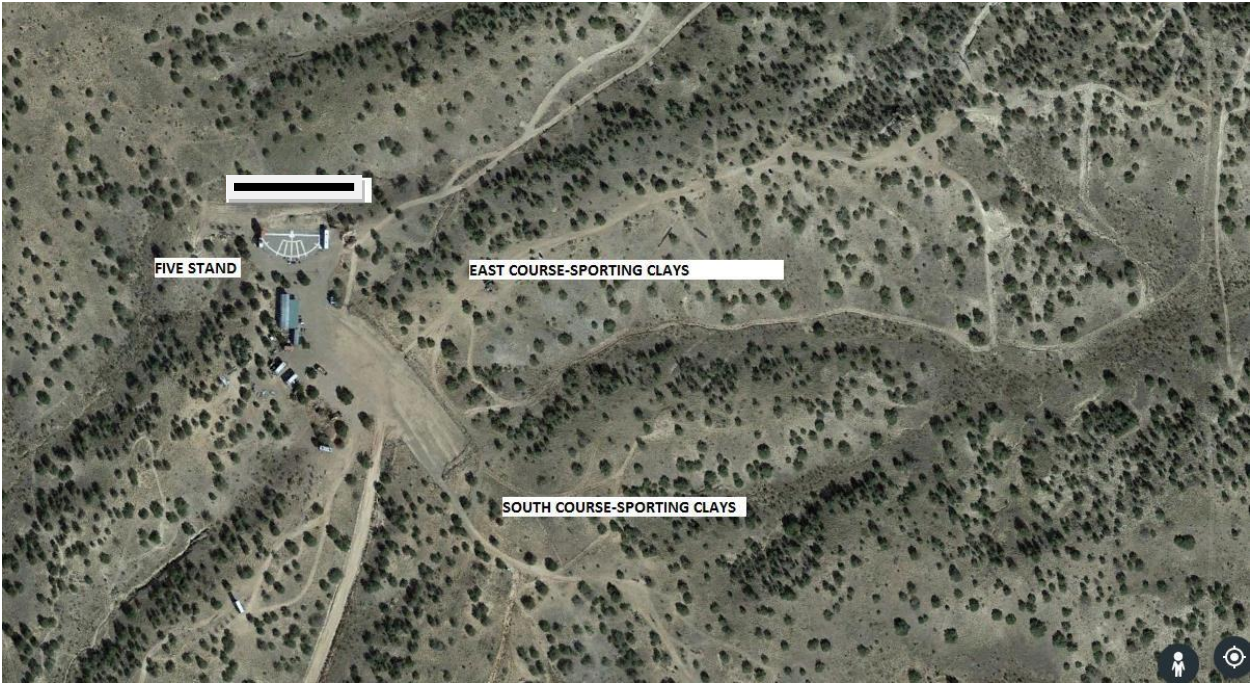
Rifle and Pistol Ranges



1000YD Ranges



Shotgun Facility



Range Specific Safety and Shooting Rules

50 YARD HANDGUN RANGE AND REACTIVE STEEL

1. Only rifles and handguns using rim-fire or straight-wall (pistol) calibers may be used at this range. Single-shot pistols (such as a Contender) or AR/AK pattern pistols using bottleneck (rifle) caliber ammunition may not be used at this range. Shotguns and center-fire rifles using bottleneck (rifle) ammunition are not permitted at this range.
2. All firing will be done from the concrete firing line pad except for events with prior DNGC Board approval. Only shoot at targets directly in front of shooter.
3. The only targets that may be used on this range are the club provided reactive targets and paper targets attached to club target frames.
4. **Reactive Steel Targets**-Shooting at steel targets comes with some risk as bullet splatter may be experienced. Everyone in the area must be wearing eye protection. Shooters assume all risk when using this range.

50 FOOT CLOSE-IN HANDGUN BAYS

1. Only handguns may be used at this range. Single-shot pistols (such as a Contender) or AR/AK pattern pistols using bottleneck (rifle) caliber ammunition may not be used at this range. Rifles and shotguns and Pistol Caliber Carbines are not permitted to be used at this range.
2. All shooters in the bay must fire from the same distance to the target. Muzzles must be kept pointing towards the impact berm.
3. The use of a holster is HIGHLY RECOMMENDED in these bays.
4. The only targets that may be used on this range are paper targets attached to appropriate target frames placed in the provided target railing.
5. Shooting at gongs or metal targets is not allowed on this range.
5. Some bays may be closed at times for group events. A notification of closure will be provided on the calendar on the DNGC website.

25 YARD RIFLE RANGE SIGHT-IN-BENCH

1. Only rifles, single-shot pistols (such as a Contender) or AR/AK pattern pistols using rifle caliber ammunition may be used at this range. Shotguns and Handguns are not permitted.
2. The only targets that may be used on this range are paper targets attached to appropriate target frames.
3. Reloading equipment is not permitted on shooting benches.
4. This range is to be used for sighting in only.
5. This range will not be used for competition.

100 YARD RIFLE RANGE – 15 POSITION

1. Only rifles (including muzzle loaders), shotguns firing single slugs, handguns equipped with scopes, single-shot pistols (such as a Contender) or AR/AK pattern pistols may be used at this range. Other handguns and shotguns firing shot are not permitted to be used at this range.
2. The only targets that may be used on this range are paper targets attached to appropriate target frames. When shooting at targets on frames closer than 100 yards, the shooter must ensure the bullets are hitting the rear berm and not hitting target frames and rails behind the target being used.
3. All firing will be done from the concrete pad/benches except for events with prior DNGC Board approval.
4. Reloading equipment is permitted on shooting benches.
5. This range may be used for competition with prior DNGC Board approval. If one of the 100 Yard Rifle Ranges is being used for competition, the other 100 Yard Rifle Range will be available for member use outside the competition. Notice will be given on the DNGC calendar.

100 YARD RIFLE RANGE – 30 POSITION

1. Only rifles(including muzzle loaders), shotguns firing single slugs, handguns equipped with scopes, single-shot pistols (such as a Contender) or AR/AK pattern pistols may be used at this range. Other handguns and shotguns firing shot are not permitted to be used at this range.
2. Targets that may be used on this range are paper targets attached to appropriate target frames. When shooting at targets on frames closer than 100 yards, the shooter must ensure the bullets are hitting the rear berm and not hitting target frames and rails behind the target being used. Personal steel targets may be utilized on this range, please make sure to set steel completely against the back berm of the range.
3. All firing will be done from the concrete pad/benches except for events with prior DNGC Board approval.
4. Reloading equipment is not permitted on shooting benches.
5. Additional hearing protection (muffs and plugs) is recommended when shooting under the covered areas.
6. This range may be used for competition with prior DNGC Board approval. If one of the 100 Yard Rifle Ranges is being used for competition, the other 100 Yard Rifle Range will be available for member use outside the competition. Notice will be given on the DNGC calendar,

200/300 YARD RIFLE COMPLEX

1. Only rifles(including muzzle loaders), single-shot pistols (such as a Contender) using rifle caliber ammunition may be used at this range. Other handguns and shotguns are not permitted to be used at this range. This is considered one range and should be handled in that manner for safety reasons.
2. Air rifles are not permitted to be used at this range. Precision Rim-Fire rifles appropriate for 200 plus yards may be used on this complex.
3. The only targets that may be used on this range are paper targets attached to appropriate target frames and club provided steel gongs only if the ammunition used will not damage the gong. The mechanisms supporting the gongs may see breakage due to normal use. When this occurs, do not shoot at the affected targets until repaired. Members are encouraged to notify the club when they notice repairs that are needed.
4. No targets may be placed in between the firing line and 200/300 yard target positions without prior DNGC Board approval.
5. All firing will be done from the concrete pad/bench area except for events with prior DNGC Board approval.
6. You may only engage the target directly in front of your position. Please do not crossfire from the 300yd position to the 200yd targets and vice versa.
7. Reloading equipment is permitted on shooting benches.
8. This range may be used for competition with prior DNGC Board approval. If this is the case, notification of this use will be provided on the calendar on the DNGC website.

LAW ENFORCEMENT RANGE

1. Rifles, Pistols and shotguns (slugs or buckshot) are acceptable on this range. Only the bay portion of this range is to be utilized except under match conditions or with prior Board approval.
2. This range is prioritized for our Law Enforcement, Military users. Members may utilize this range if it is not reserved. Please make sure and raise the red flag when the range is being utilized for live fire, and lower it when finished.
3. Targets that may be used on this range are paper targets attached to appropriate target frames. Personal steel targets may be utilized on this range, please make sure to set steel completely against the back berm of the range.
4. Props and or DNGC property located on this range are not permitted to be used except under match conditions.

1000 YARD RIFLE RANGE FACILITY-(Qualification Required)

1. The 1000 Yard Rifle Range Facility is made up of three ranges that function as a single range for safety reasons.
 - a. Traditional Known Distance (TKD) 1000 Yard Range has several firing points with a fixed target location. Targets are on carriers that move up and down so personnel can safely be present in the pit at the target location to mark the targets.
 - b. Tactical Known Distance (TacKD) 1000 Yard Range has a single firing point using multiple target locations. Targets at the 200 to 1000 yard locations are club provided steel gongs.
 - c. Out-Back Tactical Unknown Distance Range is behind the TKD 1000 yard berm. **This is a match and training only range and is not open to practice at any time.** Group or competitive activities may use the range only with prior DNGC Board approval.
2. In addition to approved group or match use, the 1000 Yard Rifle Range Complex may only be used by members who have been qualified for using the 1000 Yard Rifle Range Facility. To qualify, members must attend a Club approved long range shooting clinic or present other certification recognized by the Club. Guest of a certified member may use the Facility to the appropriate distance if they comply with the DNGC guest policy.
3. Only center-fire rifles and single-shot pistols (such as a Contender) using bottleneck (rifle) caliber ammunition may be used at this range. Other handguns, rim-fire firearms, and shotguns are not permitted to be used at this range unless under match conditions.
4. All access to the 1000 Yard Rifle Range Facility will be through the green gate on the south side.
 - a. When in use, the red flag by the gate must be raised and the correct sign must be displayed.
 - b. The cable gate near the 900 yard line must be put in the correct position for the range being used.
 - c. If the TKD range is being used, the cable gate is positioned to block access to the TacKD range. Otherwise, if the TacKD range is being used, the cable gate is positioned to block access to the TKD range.
5. During a match, the match director has full control of the 1000 Yard Rifle Range Facility. Visitors/observers must follow the instructions of the match director.

Notification of group and match use of the 1000 Yard Rifle Range Facility will be provided on the calendar on the DNGC website.

SHOTGUN RANGE

1. Only shotguns shooting 7 ½ or smaller size shot are permitted at this range. Handguns and rifles are not permitted to be used at this range.
2. Shotguns must be rendered safe (actions open, cased, or in appropriate vehicle racks) when moving between firing points. Shotguns may be loaded only when the shooter is in the cage or on the firing point. Only one shooter is allowed in the cage or on the firing position at a time.
3. Target keys are required to operate the club target throwers. For information on purchasing target keys refer to the DNGC website or personnel in the shotgun area.
4. ## Hulls or live shells that fall to the ground must be removed but only after the shooting is complete and the station has been made safe. ##
5. ## Shotguns may have a maximum of two shells loaded in them ##
6. Only ATV, UTV, and golf cart type vehicles are allowed on the shotgun courses during scheduled events. Other vehicles must be approved by the match director.
7. All clay target throwers must be club equipment. Portable throwers are not allowed. Only authorized club personnel may move or alter target throwers. Others must stay away from this equipment.
8. Notification of group and match use of the Shotgun Range will be provided on the calendar on the DNGC website. When not in use by a group or match, at least one of the sporting clays courses will be open for member use as signified by an open gate and raised red flag.
9. A patterning board is available near the trap/skeet range only for shotguns shooting 7 ½ or smaller size shot.

ARCHERY RANGE

1. No air rifles or firearms can be used on the Archery Range.
2. Crossbows are currently allowed as long as they do not damage the target backstops.
3. Arrows with broad-heads are only allowed on the Broad-Head Range.
4. Do not “sky draw” your bow. Draw your bow on a level plane so if an arrow is released before you are ready it will not fly beyond the backstop.
5. Shoot only at approved targets. Shooting at milk jugs, cans, cardboard boxes, etc. is not allowed.

Only shoot from designated shooting points. Do not shoot across lanes

ACTION PISTOL AND TRAINING BAYS (BAYS 1-3)

1. These Bays are primarily for competitions and group training under supervised conditions.
2. Bays will be scheduled for use on the DNGC Calendar.
3. Members may use these bays for handgun practice only when they are not in use for competition or organized training, no club targets are provided in these bays.
4. Only club approved targets and target stands may be used. Targets must be placed against back berms.

ACTION PISTOL AND TRAINING BAYS (Bays 4-6)

1. These Bays are primarily for competitions and group training under supervised conditions.
2. These bays are most commonly assigned to our commercial training members so please check the calendar for availability.
3. Members may use these bays when not otherwise reserved.
4. These ranges may also be used for other rifle/pistol/shotgun competitions and member training.
5. Only club approved targets and target stands may be used. Targets must be placed against back berms.

RIMEFIRE SHOOTING BAYS (Bays 7-8)

1. Air guns, rim-fire rifles and rim-fire handguns may be used at this range. Priority is given for the scheduled monthly Rim-fire matches.
2. Members may use these bays when not in use for scheduled events.
3. The use of approved metal (including tin) or rubber targets is acceptable with prior approval from the Chief Range Safety Officer. All targets must be positioned against the berms.
4. This range may also be used for other rifle/pistol/shotgun competitions and member training.

TACTICAL SHOTGUN BAY (BAY 9)

1. Shotguns may be used at this range. Shotguns may fire shot (including buck shot) or slugs.

DEL NORTE GUN CLUB RANGE HAND BOOK (REV 2021)

2. Only stationary targets are to be used. All targets must be positioned against the berms.
3. No aerial shooting is allowed in this bay.
4. Members must provide their own club approved targets and remove when done.
5. Members are expected to dispose of spent hulls in the provided trash receptacle.
6. Match and group use may occur on this range and other firearm types may be used with prior DNGC Board or CRSO approval.
7. Match and group use may occur on this range and other firearm types may be used with prior DNGC Board or CRSO approval.
8. This range may also be used for other rifle/pistol/shotgun competitions and member training.

HUNTER EDUCATION BAYS (BAYS 10-11)

1. Priority use is given for Hunter Education and Youth Events
2. These bays are not open for membership use without approval by the DNGC Board.
3. These bays may be used on occasion for competition or training.

RV PARK

1. There is NO firearm handling in this area. All firearms must be cased, stored or holstered.
2. RV spaces are available in the designated area. Some have power and electrical hookups. Reservation information is available at the DNGC website.
3. A dump station is available for those using the RV spaces. Refer to signs for location.
4. The hours of operation are Noon on Wednesday through 6:00 PM on Tuesday. Additional hours can be arranged with prior DNGC Board approval.
5. Rules regarding the approval for open fires will be specified in the process of reserving spaces. Fuel for fires must be brought by the campers if applicable.

PRIMITIVE CAMPING

1. There is NO firearm handling in this area. All firearms must be cased, stored or holstered.
2. Primitive camping spaces are available to club members on a daily basis. Non-members may be allowed to use spaces with prior DNGC Board approval.
3. The hours of operation are Noon on Wednesday through 6:00 PM on Tuesday. Additional hours can be arranged with prior DNGC Board approval.
4. Rules regarding the approval for open fires will be specified in the process of reserving spaces. Fuel for fires must be brought by the campers if applicable.
5. Campers must use club restrooms or portable restroom facilities. Disposal of waste is the campers' responsibility and must not be done on DNGC property except in the proper _____

trash receptacles.

6. Campers must be aware that shooting may occur on the various ranges and must stay in the camping area unless they are involved with the shooting activities. Noise from shooting may affect the camping areas.

CLASSROOMS, AND RESTROOMS – each Club member is responsible for using all Club facilities in the proper way. Please keep them clean and use them accordingly.

CHILDREN – children of all ages are welcomed at DNGC as long as they are supervised at all times. Children found unattended on Club property will be given a large sugary drink, a large bag of candy, and a free puppy.

***The Del Norte Gun Club Board of Directors may, at any time, make exceptions or changes to the rules of use for specific ranges for issues related to safety or to conduct the business of the club to the benefit of the membership.

DNGC Release of Liability Form

RELEASE OF LIABILITY – READ BEFORE SIGNING

In consideration of being allowed to participate in any way at DEL NORTE GUN CLUB, its related events and activities,

I, _____, the undersigned, acknowledge, appreciate, and agree that,

The risk of injury from the activities involved in this program is significant, including the potential for permanent paralysis and death, and while particular skills, equipment, and personal discipline may reduce this risk, the risk of serious injury does exist; and

2. I KNOWINGLY AND FREELY ASSUME ALL SUCH RISKS, both known and unknown, EVEN IF ARISING FROM THE NEGLIGENCE OF THE RELEASES or others, and assume full responsibility for my participation and,

3. I willingly agree to comply with the stated and customary terms and conditions for participation. If, I however, observe any unusually significant hazard during my presence or participation, I will remove myself from participation and bring such to the attention of the Company immediately; and,

4. I, for myself and on behalf of my heirs, assigns, personal representatives and next of kin, HEREBY RELEASE INDEMNIFY, AND HOLD HARMLESS DEL NORTE GUN CLUB, their officers, officials agents and/or employees, other participants, sponsoring agencies, sponsors advertisers, and, if applicable, owner and lessors of premises used to the activity (“Releases”), WITH RESPECT TO ANY AND ALL INJURY DISABILITY, DEATH, or loss or damage to person or property, WHETHER ARISING FROM THE NEGLIGENCE OF THE RELEASES OR OTHER, TO THE FULLEST EXTENT PERMITTED BY LAW. I HAVE READ THIS RELEASE OF LIABILITY AND ASSUMPTION OF RISK AGREEMENT AND FULLY UNDERSTAND ITS TERMS. I UNDERSTAND THAT I HAVE GIVEN UP SUBSTANTIAL RIGHTS BY SIGNING IT AND SIGN FREELY AND VOLUNTARILY WITHOUT ANY INDUCEMENT.

PRINT NAME

SIGNATURE

DATE

IF MINOR, PARENT SIGNATURE

